

'Healthy Futures' consultation 2011

Planned cardiology and stroke rehabilitation

Background

2006 – Healthy Futures public consultation took place

2007 – Independent Reconfiguration Panel made recommendations to Secretary of State

2008 – Healthy Futures programme commenced

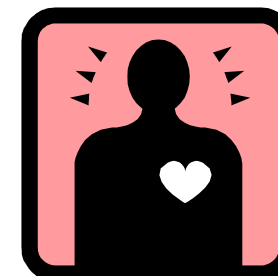


**Improving and
modernising**
healthcare closer to home



Original consultation - planned cardiology

- § Cardiology is the medical speciality that deals with heart disease.
- § The Silver Heart Unit is a Catheter Laboratory and Pacing Room at Rochdale Infirmary. It treats around 3,000 patients per year who need specialist cardiology procedures.
- § Patients from Oldham, Bury, Rochdale and parts of North Manchester travel to the Silver Heart Unit to receive these services.
- § The Healthy Futures consultation in 2006 planned to develop the Silver Heart Unit into a centre of excellence for planned cardiology services. Emergency cardiology and acute medical services would not be provided at Rochdale infirmary.
- § Today the Silver Heart Unit provides complicated and high risk procedures that need access to intensive care and anaesthetic support. The development of these complicated services was not anticipated in 2006.



Original consultation – stroke rehabilitation

- § Stroke happens when the blood supply to part of the brain is cut off.
- § Stroke rehabilitation ensures that stroke patients make the best possible recovery, reducing the risk of lasting disability
- § The 2006 Healthy Futures plan said that Rochdale stroke patients, who were treated elsewhere immediately after their stroke, would be transferred back to Rochdale Infirmary once they had been medically stable for 48 hours.



However, as a result of...

Changes in clinical practice since the original Healthy Futures consultation

The movement of acute services from the Rochdale Infirmary site

The need to maintain Silver Heart Unit BCIS* accreditation

Recommendations made by local consultants and GPs

An independent review conducted by Professor Roger Boyle in March 2011

**... new proposals for the delivery of these services
have been developed**

* British Cardiovascular Intervention Society

Proposals for planned cardiology

Improve local provision for the prevention and early detection of heart disease
Relocate complicated and high risk planned procedures from Rochdale Infirmary to Fairfield General Hospital where access to anaesthetics and critical care is available.

Maintain outpatient services on all sites

Develop less invasive procedures to detect and diagnose stable angina on all four sites within Pennine Acute Hospitals NHS Trust.

Proposals for stroke rehabilitation

Option one Stroke rehabilitation (for Rochdale residents) delivered in a specialist stroke unit co-located with an acute stroke facility whilst also developing timely supported discharge

Option two As option one with the added development of a step down inpatient stroke facility in the Rochdale Borough.

Pre-consultation engagement

Clinical commissioners, local clinicians, the cardiac and stroke network, provider organisations and adult social care were involved in the development of the proposals.

Pre-engagement has been undertaken to allow patients, public and carers to influence the development of the options. 189 people were reached and key areas identified via this process include:

- Transport
- Ongoing support once discharged from hospital
- Importance of specialist care
- Information and communication
- Overall patient experience and quality of care



Public consultation – Your views count!

Launched on 17th October 2011, runs for 12 weeks, until 14th January 2012

Your views matter because we need to understand how you and those you care for might be affected.

Please read the consultation documents and complete the consultation questionnaire.

Findings will be independently analysed and consultation report produced for Greater Manchester Cluster Board approval Spring 2012.

